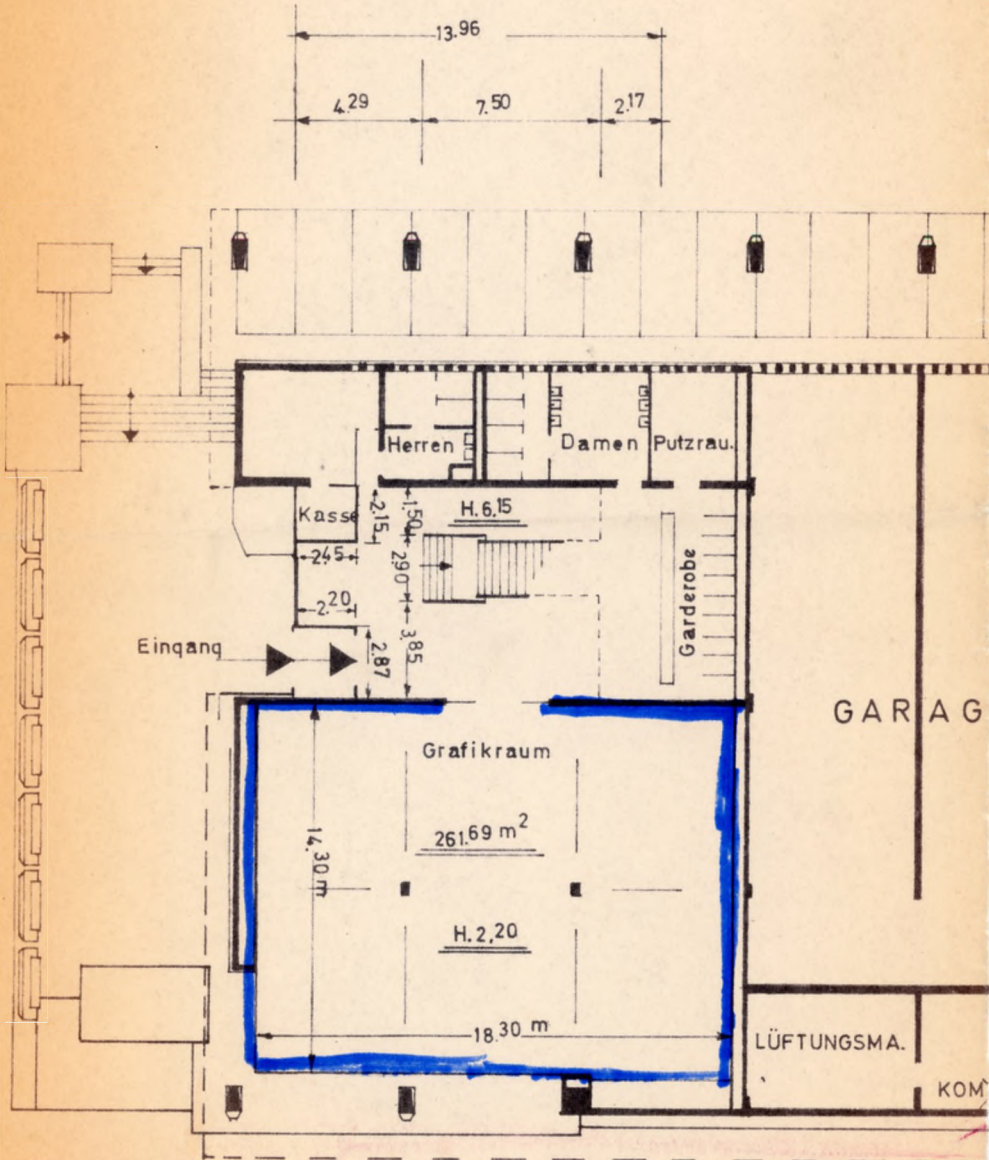


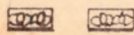
AUSSTELLUNG

| | | |
|------------|-----------------------------|-----------|
| Eingang | 81.84 m ² | H. 6.15 m |
| Grafikraum | 261.69 m ² | H. 2.20 m |
| | <u>343.53 m²</u> | |

Zwischengeschoß
 1. Obergeschoß
 2. Obergeschoß



Hunsrückenstr.



Karyatiden

Zwischengeschoß

